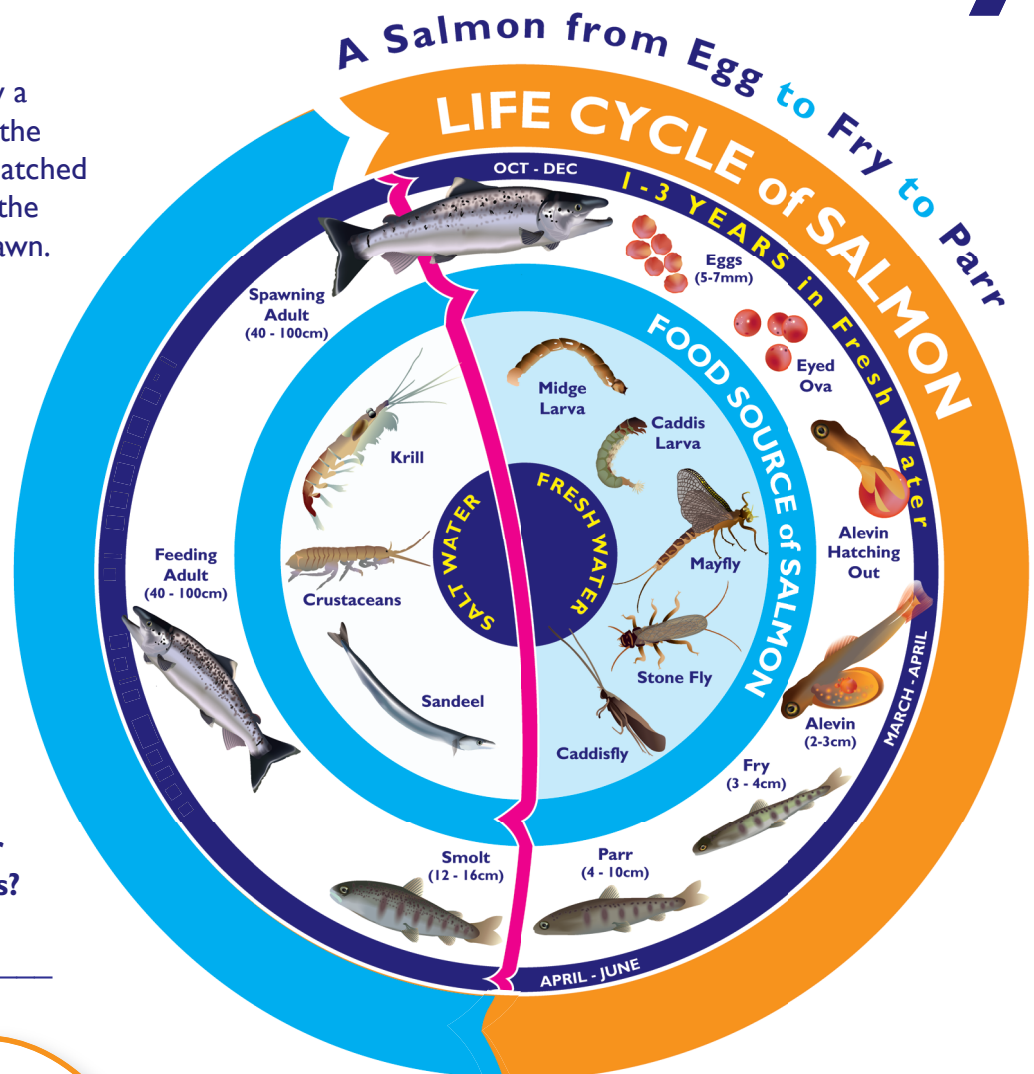


## Activity Card

# Bradán (A Salmon) tells her story

You are going to follow a salmon's journey from the little stream where it hatched until it arrives back to the same place again to spawn.



Do you know another name for salmon eggs?

### Did you know?

Salmon start their lives as spawn or eggs in small streams and rivers. Life's journey takes a salmon from the spot where the eggs are laid down, along the river, through the estuary, into the sea and right back again to where it was born.

### BRADÁN'S STORY

High up in a mountain a small stream gurgles. It is not very deep, wide or impressive but it is the beginning or source of a powerful river that flows through a valley below. This little stream is home or **habitat** for Bradán. It is full of clean, loose gravel. A female salmon makes a pit in the gravel and lays eggs. After fertilisation, she covers the pit and makes a mound in the gravel for her eggs. This mound is called a **redd**. Bradán is starting her life here as a salmon egg, protected by the clean gravel.

## Activity Card



### BRADÁN (A SALMON) TELLS HER STORY

A balance of large and small stones in the water gives Bradán access to clean, fresh water with plenty of oxygen. Without oxygen, Bradán cannot grow and develop into a healthy salmon.

#### Experiment

Oxygen in Water



The land and environment around the stream is clean and natural. Plants, animals, insects and fish can thrive here. The balance of nature is good.

To grow into a fine big salmon, Bradán needs your help to keep her habitat safe and healthy!

A farmer has moved a herd of sheep on to the mountain. They graze near the stream and sometimes drink from it. If the sheep eat all the vegetation, the soil will become exposed and barren. When it rains, the soil could move and cause a landslide into the stream. Mud and silt clog up the gravel. Bradán and the other salmon eggs could suffocate.

#### Experiment

Landslide



**Can you suggest a simple solution if Bradán's habitat is threatened by too many sheep nearby?**

---

---

---

**What could be done to stop sheep from getting in along the river edge?**

---

---

---



If you have many plants along the banks of a stream, you will also have plenty of i \_ \_ \_ c \_ \_ .

## Activity Card



### BRADÁN (A SALMON) TELLS HER STORY

As Bradán develops, she absorbs her yoke sack and emerges as an alevin.

Quite soon, she will become a little dark fry about 3 - 4cm in length.

She is then free at last to wiggle and dart about.

She leaves her **redd** and travels a short distance downstream.

The water here is teeming with life: plenty of other fry, small trout, insects, nymphs and larvae. Nymphs and larvae are juvenile insects and these are now her favourite food.

She is happy here but she must be careful.

Salmon fry like to have their own space or territory. When they are too close together they become aggressive. They need large stones and boulders in this section of the river to hide from fry friends and trout.

With plentiful supply of food about, Bradán grows larger and stronger each day and becomes a **parr**. Soon it will be time to move downstream into deeper waters.



### Fishy Joke

**Q.** What did one trout say to the other trout?

**A.** Let's have fry for dinner

